






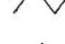

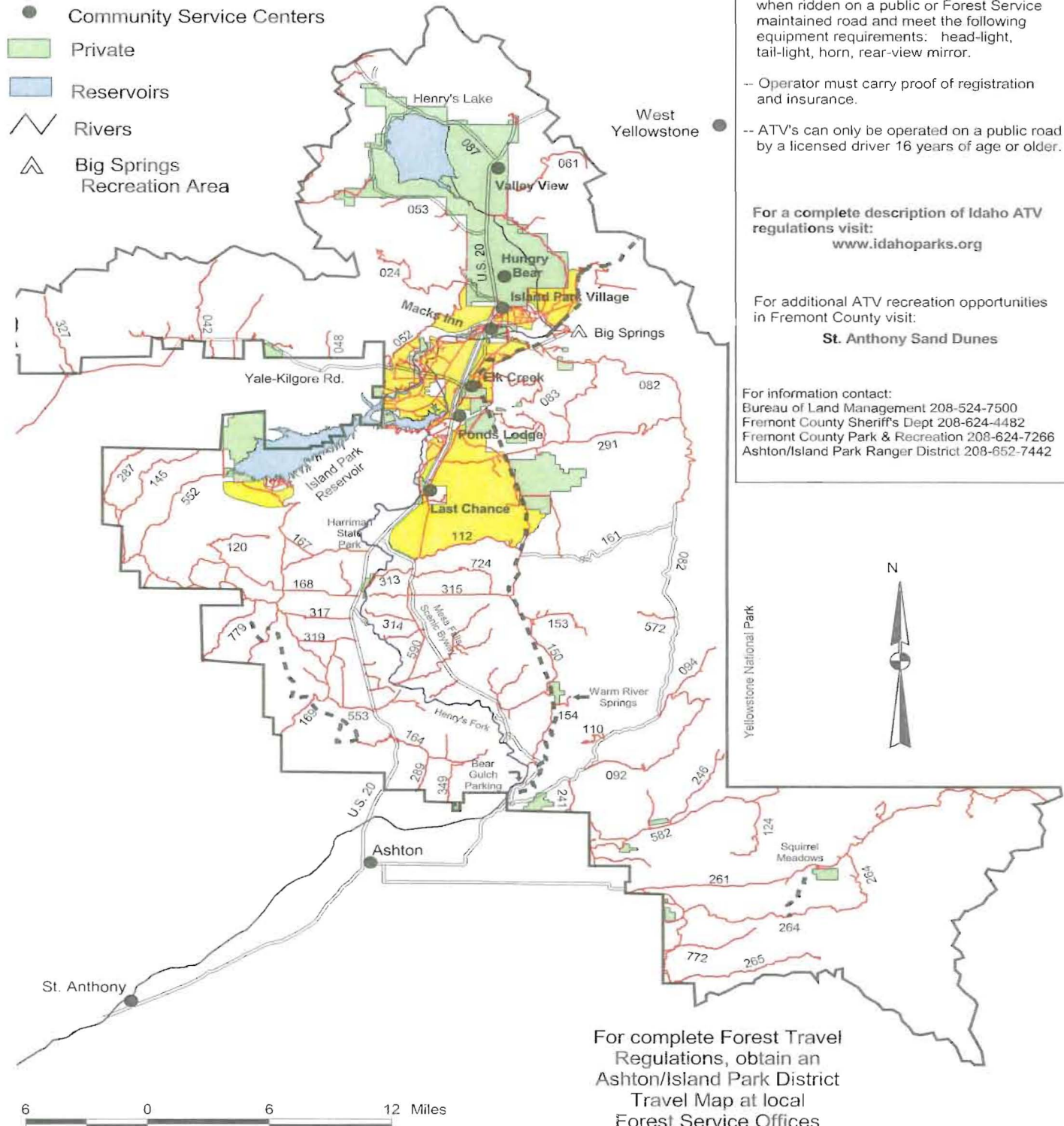


# Ashton/Island Park Ranger District ATV User Guide

## Caribou-Targhee Motorized Travel Areas

-  Open to Cross Country Travel to Vehicles less than 50" wide
-  Designated ATV Trail
-  Roads Open to ATV Travel
-  Paved Roads
-  Community Service Centers
-  Private
-  Reservoirs
-  Rivers
-  Big Springs Recreation Area



## Attention All ATV/Off Highway Vehicle Operators

- No ATV's on paved roads.
- ATV's must be licensed for off-highway use.
- Helmets are required for drivers/passengers 17 years of age and younger.
- ATV's must be licensed for street use when ridden on a public or Forest Service maintained road and meet the following equipment requirements: head-light, tail-light, horn, rear-view mirror.
- Operator must carry proof of registration and insurance.
- ATV's can only be operated on a public road by a licensed driver 16 years of age or older.

For a complete description of Idaho ATV regulations visit:  
[www.idahoparks.org](http://www.idahoparks.org)

For additional ATV recreation opportunities in Fremont County visit:  
**St. Anthony Sand Dunes**

For information contact:  
Bureau of Land Management 208-524-7500  
Fremont County Sheriff's Dept 208-624-4482  
Fremont County Park & Recreation 208-624-7266  
Ashton/Island Park Ranger District 208-652-7442

N



For complete Forest Travel Regulations, obtain an Ashton/Island Park District Travel Map at local Forest Service Offices