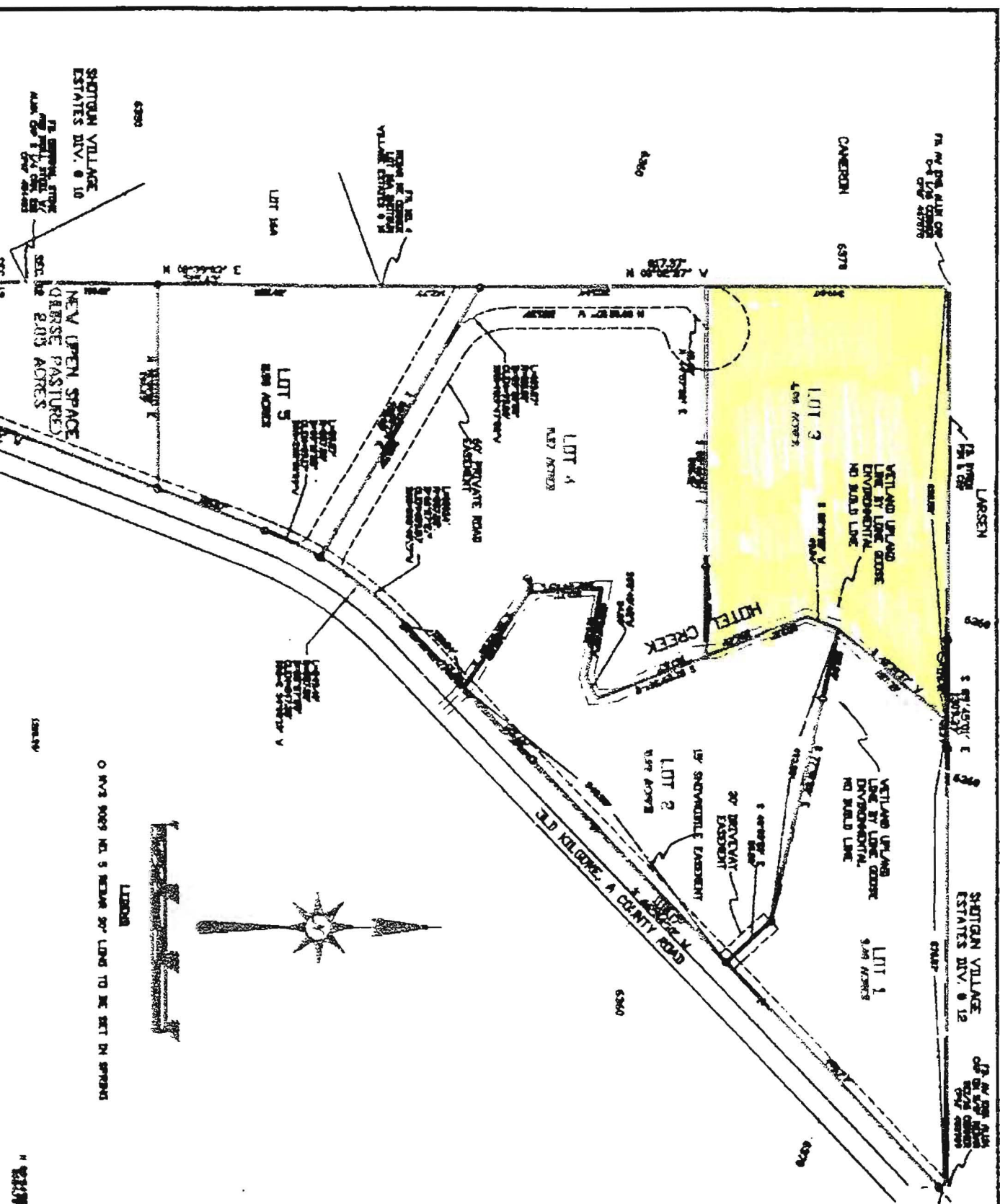


PR
HOTEL
SECTION 12
BOISE ME

A PARCEL OF LAND
RANGE 46 EAST, 5
SURVEY FOR JOY
AS PARCEL NO. 1,
BEING THAT AT THE
THE SOUTHEAST CORNER
TO THE NORTHEAST
NEAR THE THENCE IN
PER AND CAP, THE
CORNERING PIN,
POINT ON THE NE
NORTHEASTLY, 1/4
1/4 THENCE S 44° 24'
2° THENCE S 88° 44'
OF 877.00 FEET A
A BEARING OF S
A FEET OF CURVE,
HAVING A RADIUS
CHORD BEARS THE
DISTANCE OF 148.4
THE ARC OF A QU
CENTRAL ANGLE OF
OF 36.47 FEET IT
SAID SECTION 12)
BEING FEET TO
OR LESS.



SHOTGUN VILLAGE
ESTATES DIV. 8 10
NEW OPEN SPACE
(GERSE PASTURED)
2.03 ACRES

OLD KILGORE A COUNTY ROAD

LOT 1
9.28 ACRES

LOT 2
1.97 ACRES

LOT 3
4.08 ACRES

LOT 4
1.87 ACRES

LOT 5
2.88 ACRES

PR
HOTEL
SECTION 12
BOISE ME