

DR

NORTH FORK HIGHLANDS  
DIVISION #1  
422800  
457079

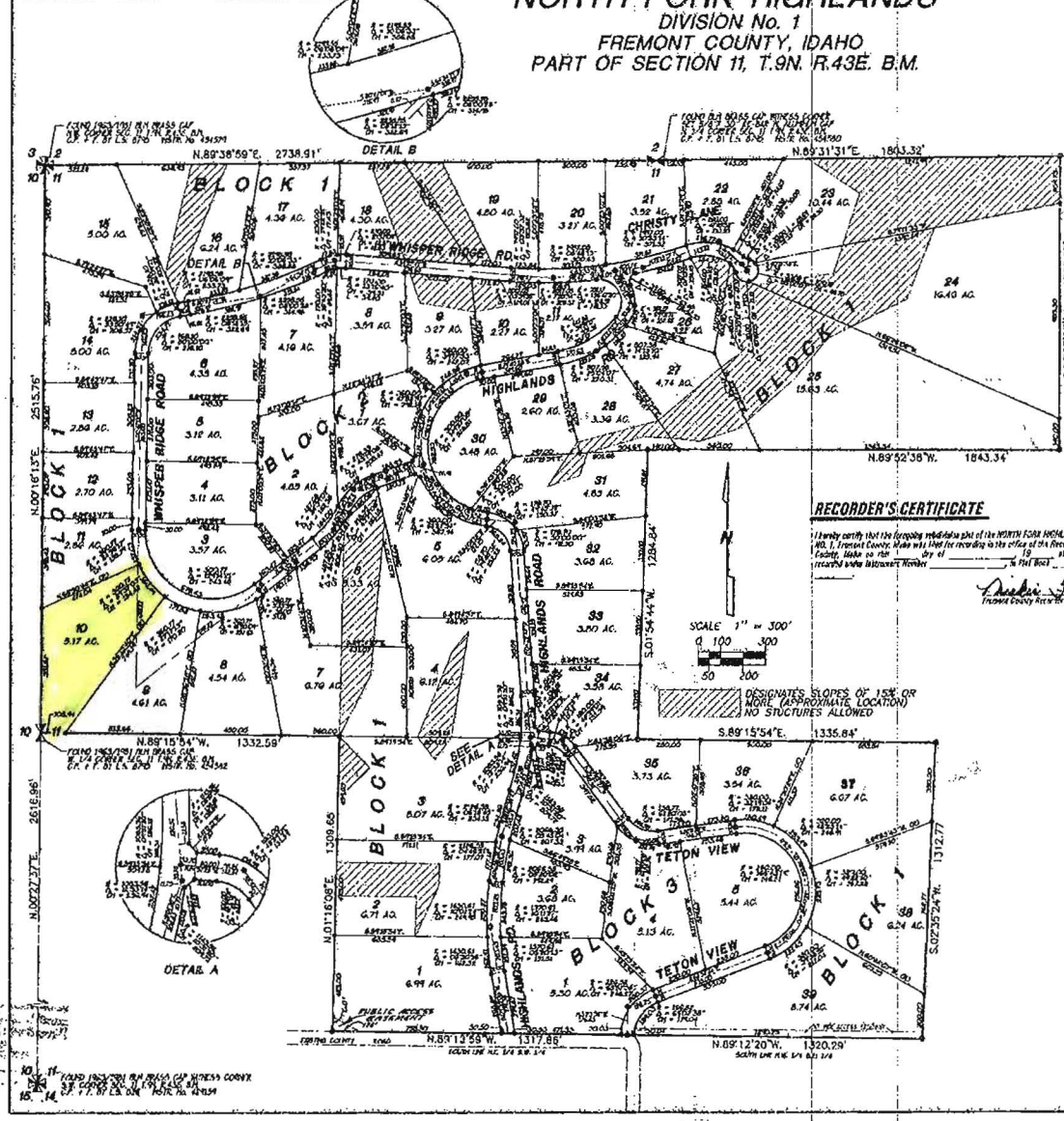
SEC. 11  
TWP. 9N  
RGE. 43 EBM

1020 E. Lincoln Road  
Idaho Falls, Idaho 83401  
(208) 524-8178  
FAX 524-8181

# NORTH FORK HIGHLANDS

DIVISION No. 1  
FREMONT COUNTY, IDAHO  
PART OF SECTION 11, T.9N. R.43E. B.M.

SHEET 1 OF 2



ROUND CORNER BEARS  
N. 89° 31' 31" E. 1843.32'  
S. 89° 31' 31" W. 1843.32'

### SURVEYOR'S CERTIFICATE

I, Robert Joe Miska, do hereby certify that I am a Professional Land Surveyor, that I have surveyed the tract of land described in the foregoing subdivision attached hereto, that said tract was located on the ground according to State Law and the original survey.

STATE OF IDAHO  
CERTIFICATE NO. 8795



### EXAMINING SURVEYOR'S CERTIFICATE

I hereby certify that I have examined this plat and find it to be correct and acceptable as required in Section 50-1308 of the Idaho Code.

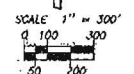
Dated: 4-7-99

*Debbie Swartz*  
Fremont County Surveyor  
L.S. 760

### RECORDER'S CERTIFICATE

I hereby certify that the foregoing subdivision plat of the NORTH FORK HIGHLANDS DIVISION No. 1, Fremont County, Idaho was filed for recording in the office of the Recorder of Fremont County, Idaho on this \_\_\_\_\_ day of \_\_\_\_\_, 1999, and is a true and correct copy of the original survey.

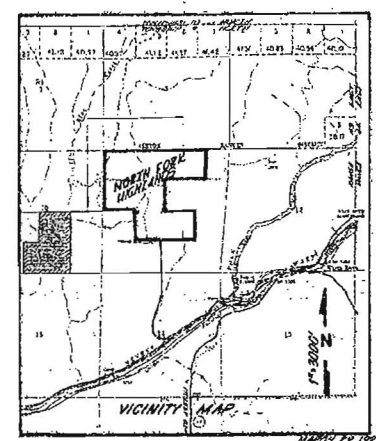
*Debbie Swartz*  
Fremont County Recorder



DESIGNATES SLOPES OF 15% OR MORE (APPROXIMATE LOCATION) AND STRUCTURES ALLOWED

### LEGEND & NOTES

- 60" x 30" Street for use with private and municipal L.S. 8785
- 12" x 24" Street for use with private and municipal L.S. 8785
- Tax Parcels Library Extracts in heavy printed along road boundaries within each lot (NOT SHOWN ON PLAT)



MARCH 29, 1999 A.C.  
43259