

1868

SEC 8
TWP 12 N
RGE 43 EBM

ROBBINS SUB 60122
330111 22273

ROBBINS SUBDIVISION

FREMONT COUNTY, IDAHO

Part of SW 8, T. 12N., R. 43E., B.M.

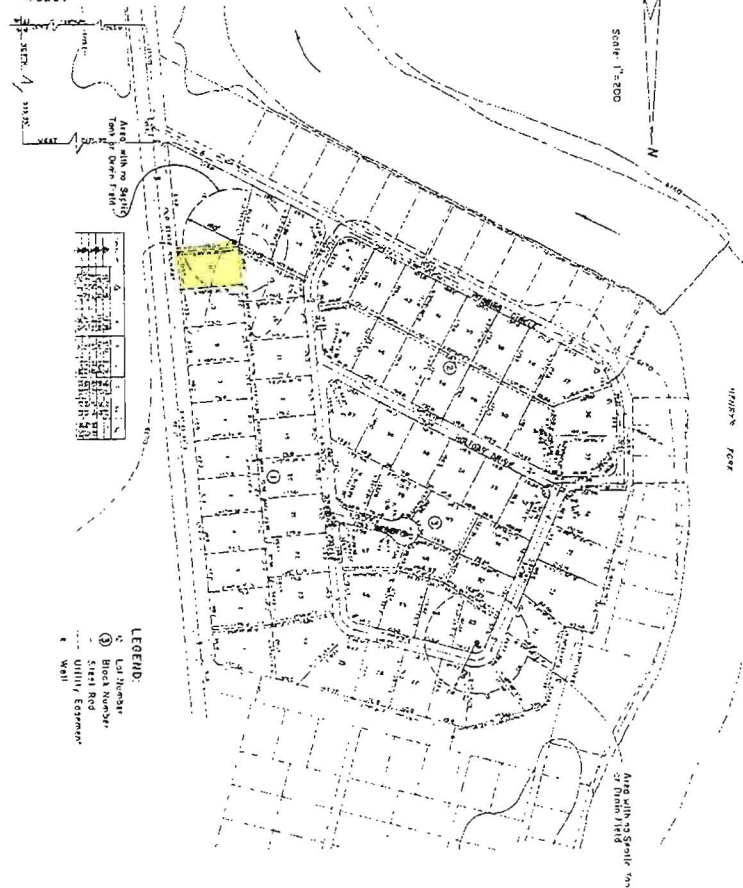
IONSCHE PERENA ASSOCIATES P.A.
CONSULTING ENGINEERS
REXBURG
IDAHO



COUNTY APPROVAL NO. 330111

Site of this County of Fremont, Idaho, and filed in the office of the County Clerk on this 12th day of February, 1988.
By: *Robert E. Fong*
Professional Engineer

COUNTY APPROVAL AND ACCEPTANCE
County Board of County Commissioners, City of Fremont, Idaho
Approved: *[Signature]*
Date: *Feb 19, 1988*



LEGEND:
① Lot Number
② Street
③ Utility
④ Well

ACKNOWLEDGMENT
I, the undersigned, hereby certify that the above and foregoing plat was prepared by me or under my direct supervision and that I am a duly licensed Professional Engineer in the State of Idaho.

OWNER'S DECLARATION
I, the undersigned, hereby certify that the above and foregoing plat was prepared by me or under my direct supervision and that I am a duly licensed Professional Engineer in the State of Idaho.

Lot No.	Area (Acres)	Dimensions
1	0.125	100' x 125'
2	0.125	100' x 125'
3	0.125	100' x 125'
4	0.125	100' x 125'
5	0.125	100' x 125'
6	0.125	100' x 125'
7	0.125	100' x 125'
8	0.125	100' x 125'
9	0.125	100' x 125'
10	0.125	100' x 125'
11	0.125	100' x 125'
12	0.125	100' x 125'
13	0.125	100' x 125'
14	0.125	100' x 125'
15	0.125	100' x 125'
16	0.125	100' x 125'
17	0.125	100' x 125'
18	0.125	100' x 125'
19	0.125	100' x 125'
20	0.125	100' x 125'
21	0.125	100' x 125'
22	0.125	100' x 125'
23	0.125	100' x 125'
24	0.125	100' x 125'
25	0.125	100' x 125'
26	0.125	100' x 125'
27	0.125	100' x 125'
28	0.125	100' x 125'
29	0.125	100' x 125'
30	0.125	100' x 125'
31	0.125	100' x 125'
32	0.125	100' x 125'
33	0.125	100' x 125'
34	0.125	100' x 125'
35	0.125	100' x 125'
36	0.125	100' x 125'
37	0.125	100' x 125'
38	0.125	100' x 125'
39	0.125	100' x 125'
40	0.125	100' x 125'
41	0.125	100' x 125'
42	0.125	100' x 125'
43	0.125	100' x 125'
44	0.125	100' x 125'
45	0.125	100' x 125'
46	0.125	100' x 125'
47	0.125	100' x 125'
48	0.125	100' x 125'
49	0.125	100' x 125'
50	0.125	100' x 125'

ENGINEER'S CERTIFICATE
I, CLAYTON E. FONG, a duly licensed Professional Engineer in the State of Idaho, do hereby certify that the above and foregoing plat was prepared by me or under my direct supervision and that I am a duly licensed Professional Engineer in the State of Idaho.