

# ROBBINS SUBDIVISION

FREMONT COUNTY, IDAHO

Part of SW<sup>4</sup> Sec. 8, T. 12 N., R. 43 E., B. M.

FORSGREN, PERKINS & ASSOCIATES P.A.  
CONSULTING ENGINEERS  
REXBURG, IDAHO

ENGI

I, CLAYTON E. FORSGREN  
I hold Certificate No. 1323, as prescribed and  
owners I have made a survey of the tract of land  
land into blocks, lots and streets, hereafter to be k  
and the same has been correctly surveyed and all at

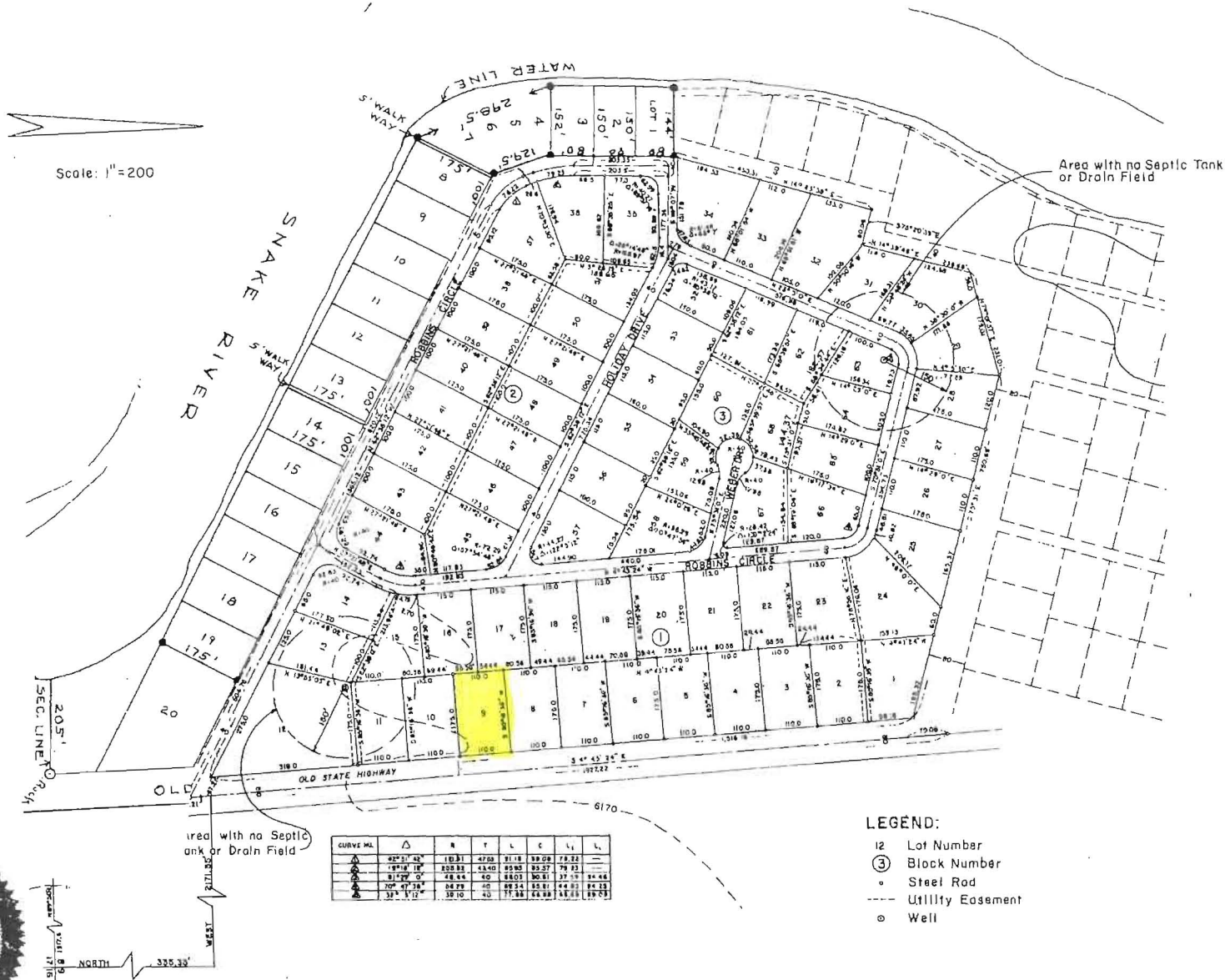
Course	Distance	
		Comme
North	335.33	and
West	2171.55	of the S
		Fremont
N62°38'12"W	1365.12	to a poin
		Δ of 42
		76.22
N19°48'30"W	26.60	to a poin
		and a Δ
		79.23
N0°30'18"W	203.50	thence
S89°07'00"W	40.00	thence
N14°43'38"E	450.31	thence
S75°20'39"E	80.08	thence
N14°39'48"E	238.68	thence
N74°01'37"E	231.01	thence
S75°31'00"E	750.68	thence
S4°43'24"E	1516.16	to the poi

7-10-72  
DATE

OWN

Know all men by these presents that we, the u  
same to be subdivided into blocks, lots and streets to  
and do hereby warrant and save the City, harmless  
dedicate for the perpetual use of the public all parcels  
In witness whereof we have hereunto set our sig

NOTE: Roads on the interior of this s  
owners only and not dedicated for



LEGEND:

- 12 Lot Number
- ③ Block Number
- Steel Rod
- - - Utility Easement
- Well



MISSIONERS FRP  
-SOLUTION-