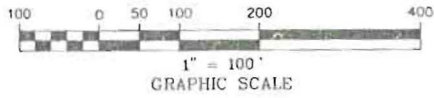


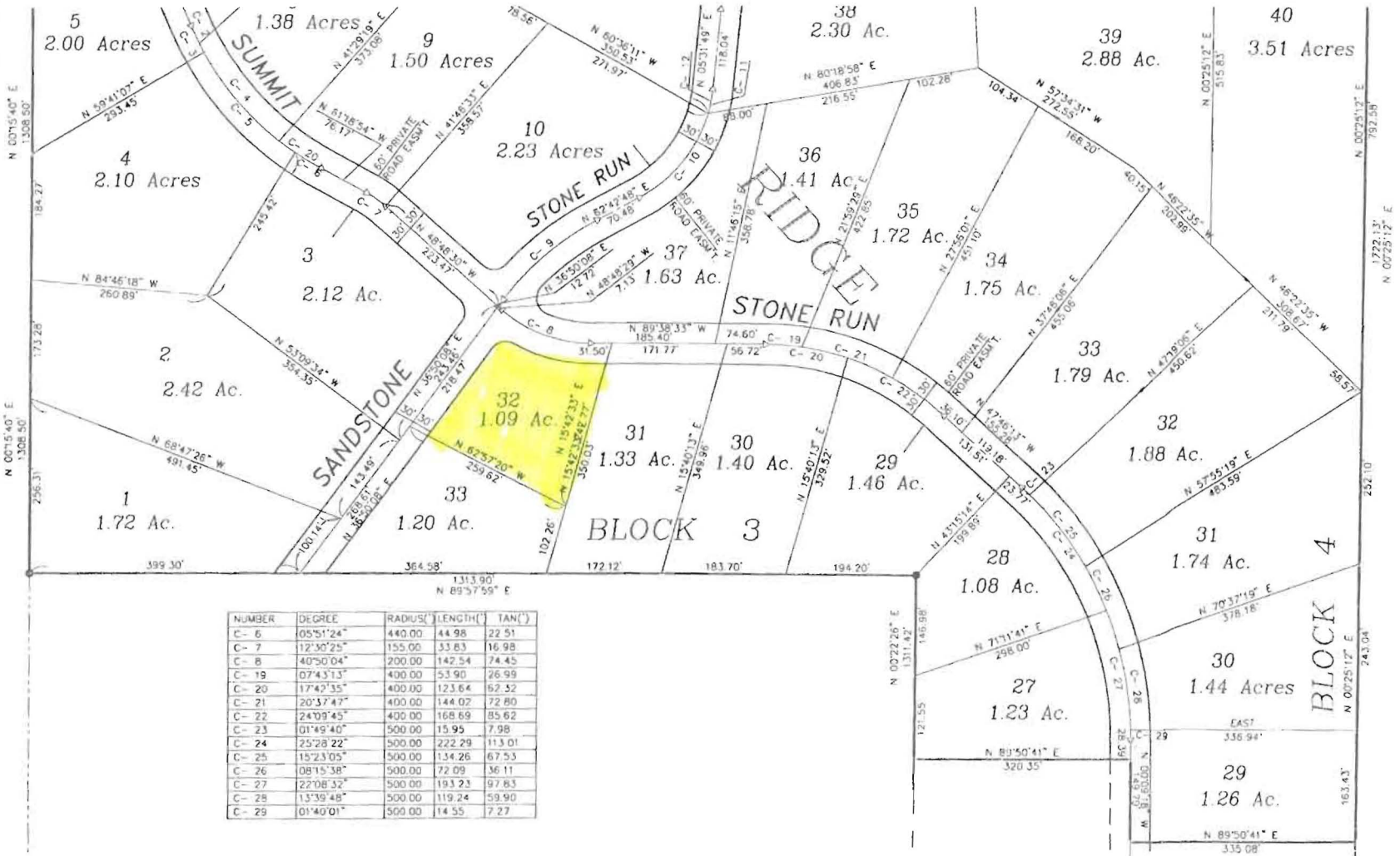
# STONEGATE PHASE 1

SHEET 5 OF 6 SHEETS.  
447764



BEING A SUBDIVISION OF THE SOUTHWEST 1/4 OF SECTION 14,  
TOGETHER WITH THE WEST 1/2 AND THE SOUTHEAST 1/4 OF SECTION 23,  
TOWNSHIP 14 NORTH, RANGE 43 EAST, B.M., FREMONT COUNTY, IDAHO  
ENGINEERING VENTURES, INC. ST. ANTHONY, ID.

SEE SHEET 4



NUMBER	DEGREE	RADIUS	LENGTH	TAN(°)
C- 6	05°51'24"	440.00	44.98	22.51
C- 7	12°30'25"	155.00	33.63	16.98
C- 8	40°50'04"	200.00	142.54	74.45
C- 19	07°43'13"	400.00	53.90	26.99
C- 20	17°42'35"	400.00	123.64	62.52
C- 21	20°37'47"	400.00	144.02	72.80
C- 22	24°09'45"	400.00	168.69	85.62
C- 23	01°49'40"	500.00	15.95	7.98
C- 24	25°28'22"	500.00	222.29	113.01
C- 25	15°23'05"	500.00	134.26	67.53
C- 26	08°15'38"	500.00	72.09	36.11
C- 27	22°08'32"	500.00	193.23	97.83
C- 28	13°39'48"	500.00	119.24	59.90
C- 29	01°40'01"	500.00	14.55	7.27

14 & 23  
T. 14 North  
Rge. 43 E.B.M.

STONEGATE  
PHASE 1  
447764

8/3/1987  
5/66

1-10-85

4BER