

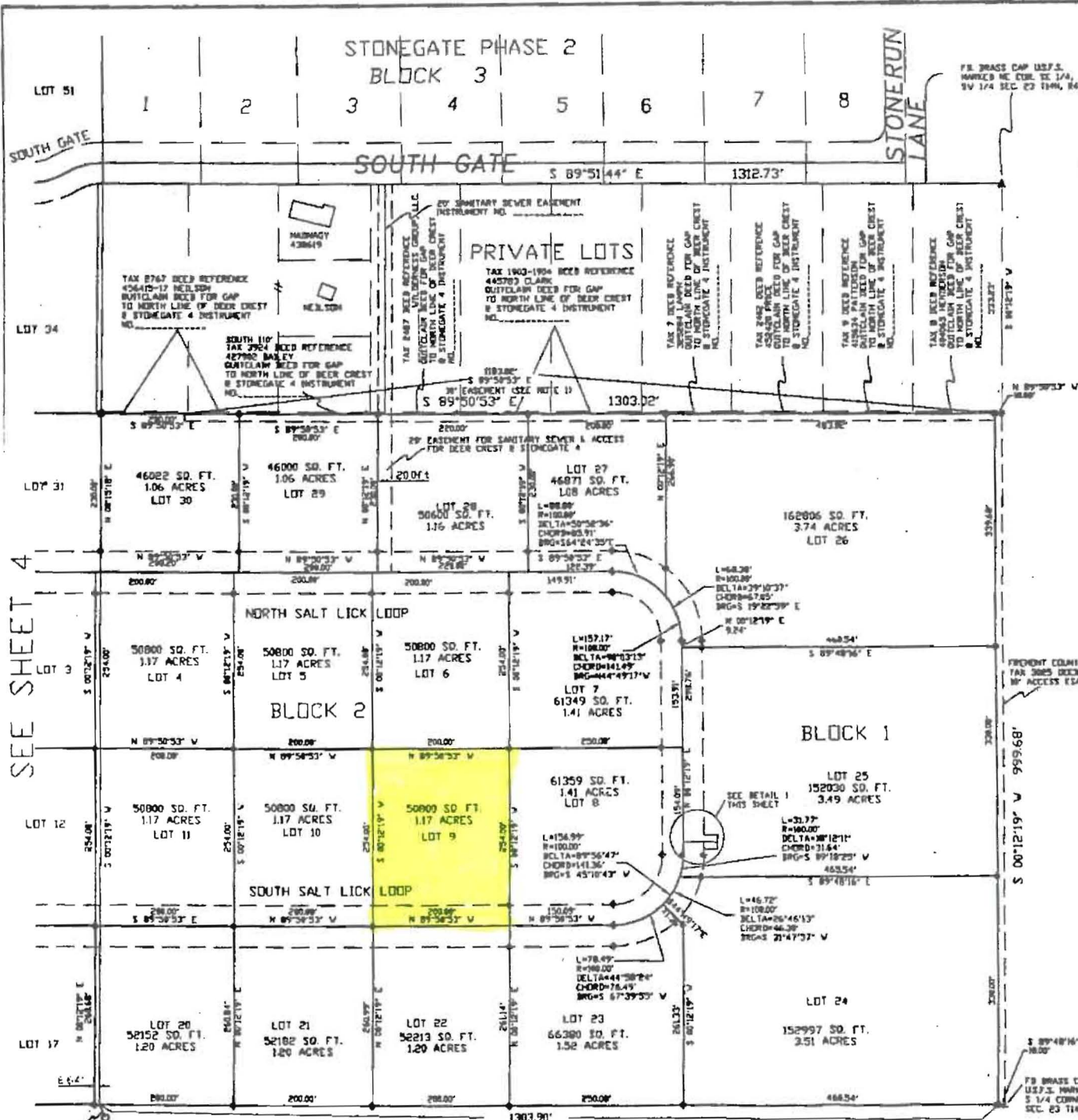
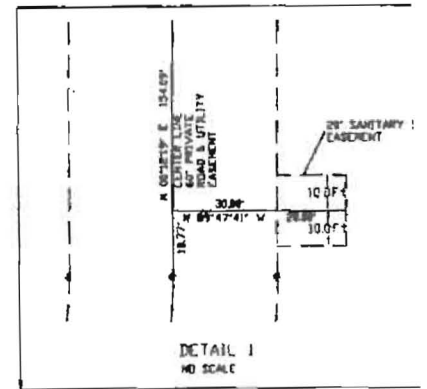
FINAL PLAT 4741 DEER CREST @ STONEGATE 4

BEING A SUBDIVISION OF A PORTION OF THE SOUTHWEST 1/4
OF SECTION 23, TOWNSHIP 14 NORTH, RANGE 43 EAST, 34th, FREMONT COUNTY,
MOUNTAIN VIEW SURVEYING - ISLAND PARK, ID

NOTES:
1) A 10 FOOT NONEXCLUSIVE EASEMENT IS FOR ACCESS TO
PRIVATE LOTS TO THE NORTH, IS ALSO ACCESS FOR THE
OWNERS AND ASSIGNS OF DEER CREST AT STONEGATE 4.

LEGEND

- SET N.E. 5 REBAR 30" LONG
W/ PLASTIC CAP STAMPED MVS 9029
- FOUND MONUMENT AS SHOWN
- ▲ FOUND BRASS 2 1/2" CAP AS SHOWN
- ◆ 5 REBAR 24" LONG W/ PLASTIC CAP
STAMPED MVS 9029 TO BE SET BY
JULY 30, 2002



SEE SHEET 4

FB. 25 REBAR W/
ALUM. CAP 827
2011230'E 8.5'

FOREST SERVICE N 89°48'16" W 2617.80'

FB BRASS CAP
U.S.F.S. MARKER
S 1/4 CORNER
SEC. 23 14N, 84E

