

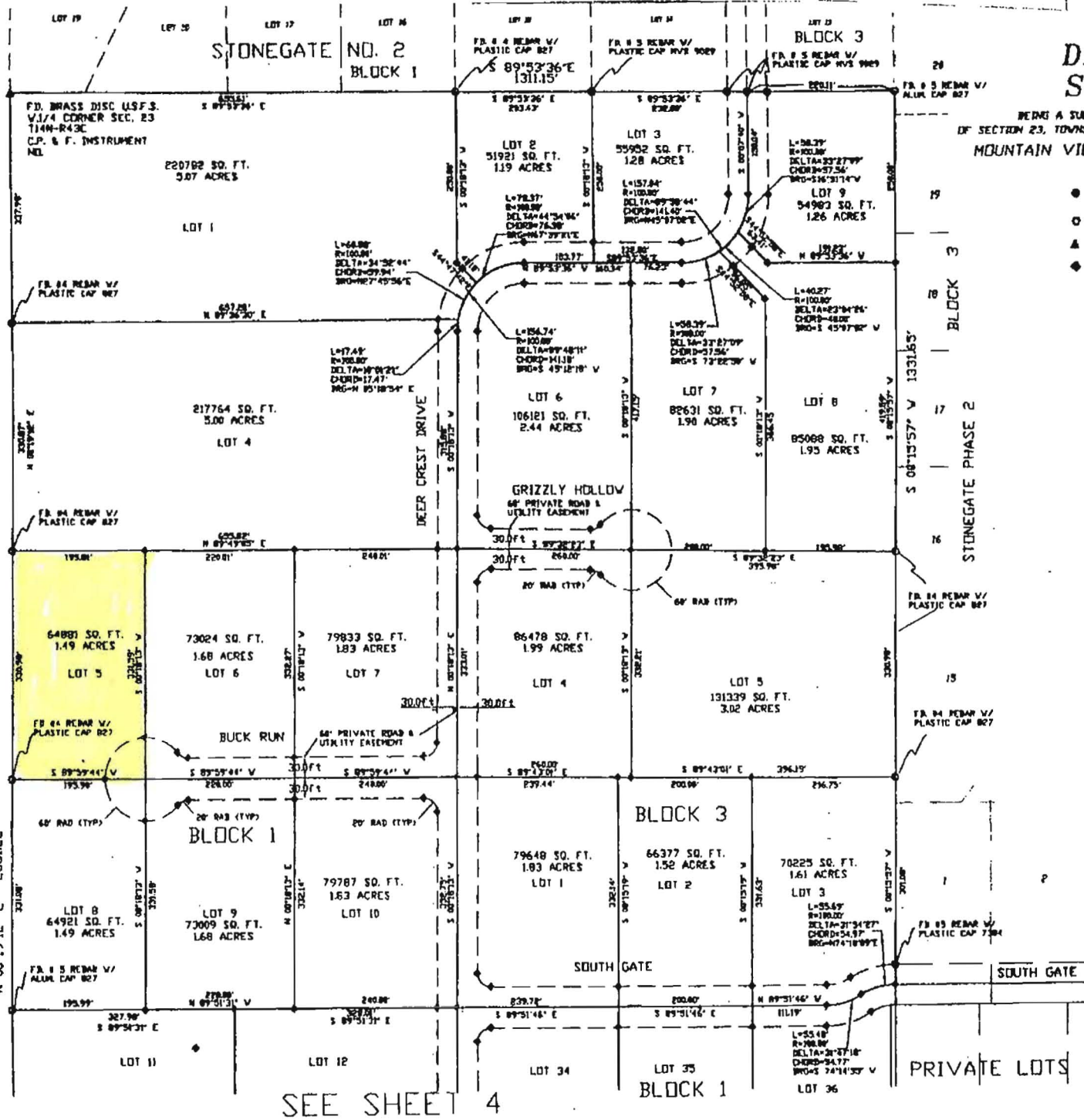
FINAL PLAN DEER CREST @ STONEGATE 4

BEING A SUBDIVISION OF A PORTION OF THE SOUTHWEST 1/4
OF SECTION 23, TOWNSHIP 14 NORTH, RANGE 43 EAST, 3rd. FREMONT COUNTY,
MOUNTAIN VIEW SURVEYING - ISLAND PARK, ID

LEGEND

- SET NO. 5 REBAR 30" LONG
V/ PLASTIC CAP STAMPED MVS 9029
- FOUND MONUMENT AS SHOWN
- ▲ FOUND BRASS 2 1/2" CAP AS SHOWN
- ◆ 5 REBAR 24" LONG V/PLASTIC CAP
STAMPED MVS 9029 TO BE SET BY
JULY 30, 2002

FOREST SERVICE



SEE SHEET 4